

---

Operating instructions and spare parts list

# Waste powder conveying from recovery container WPS01

**TW**  
**Gema**

**Documentation WPS01-PP03**

© Copyright 2006 ITW Gema GmbH

All rights reserved.

This publication is protected by copyright. Unauthorized copying is prohibited by law. No part of this publication may be reproduced, photocopied, translated, stored on a retrieval system or transmitted in any form or by any means for any purpose, neither as a whole nor partially, without the express written consent of ITW Gema GmbH.

OptiFlex, OptiTronic, OptiGun, EasyTronic, OptiSelect, OptiFlow and SuperCorona are registered trademarks of ITW Gema GmbH.

OptiStar, OptiSpray, OptiMatic, OptiMove, OptiMaster, OptiPlus, MultiTronic and Gematic are trademarks of ITW Gema GmbH.

All other product names are trademarks or registered trademarks of their respective holders.

Reference is made in this manual to different trademarks or registered trademarks. Such references do not mean that the manufacturers concerned approve of or are bound in any form by this manual. We have endeavored to retain the preferred spelling of the trademarks, and registered trademarks of the copyright holders.

To the best of our knowledge and belief, the information contained in this publication was correct and valid on the date of issue. ITW Gema GmbH makes no representations or warranties with respect to the contents or use of this publication, and reserves the right to revise this publication and make changes to its content without prior notice.

**Printed in Switzerland**

ITW Gema GmbH  
Mövenstrasse 17  
9015 St. Gallen  
Switzerland

Phone: +41-71-313 83 00  
Fax.: +41-71-313 83 83

E-Mail: [info@itwgema.ch](mailto:info@itwgema.ch)  
Homepage: [www.itwgema.ch](http://www.itwgema.ch)

# Table of contents

<b>General safety regulations</b>	<b>3</b>
Safety symbols (pictograms).....	3
Conformity of use.....	3
Product specific security measures .....	4
<b>About this manual</b>	<b>5</b>
General information .....	5
<b>WPS01 Waste powder conveying system</b>	<b>7</b>
System overview.....	7
<b>Spare parts list</b>	<b>9</b>
Ordering spare parts .....	9
PP03-1 Powder pump - spare parts list .....	10
PP03-2 Powder pump - spare parts list .....	11



# General safety regulations

This chapter specifies the fundamental safety regulations that must be followed by the user and third parties using the WPS01-PP03 system.

These safety regulations must be read and understood before the WPS01-PP03 system is used.

---

## Safety symbols (pictograms)

The following warnings with their meanings can be found in the ITW Gema operating instructions. The general safety precautions must also be followed as well as the regulations in the operating instructions.

**DANGER!**

Danger due to live electricity or moving parts. Possible consequences: Death or serious injury

**WARNING!**

Improper use of the equipment could damage the machine or cause it to malfunction. Possible consequences: minor injuries or damage to equipment

**INFORMATION!**

Useful tips and other information

---

## Conformity of use

1. The WPS01-PP03 system is built to the latest specification and conforms to the recognized technical safety regulations. It is designed for the normal application of powder coating.
2. Any other use is considered as non-conform. The manufacturer is not responsible for damage resulting from improper use of this equipment; the end-user alone is responsible. If the WPS01-PP03 system is to be used for other purposes or other substances outside of our guidelines then ITW Gema GmbH should be consulted.
3. Observance of the operating, service and maintenance instructions specified by the manufacturer is also part of conformity of use. The WPS01-PP03 system should only be used, maintained

and started up by trained personnel, who are informed about and are familiar with the possible hazards involved.

4. Start-up (i.e. the execution of a particular operation) is forbidden until it has been established that the WPS01-PP03 system has been set up and wired according to the guidelines for machinery (98/37 EG). EN 60204-1 (machine safety) must also be observed.
5. Unauthorized modifications to the WPS01-PP03 system exempts the manufacturer from any liability from resulting damage.
6. The relevant accident prevention regulations, as well as other generally recognized safety regulations, occupational health and structural regulations are to be observed.
7. Furthermore the country-specific safety regulations must be observed.



---

**Note:**

**For further security information, see the more detailed ITW Gema safety regulations!**

---

---

## Product specific security measures

- The installation work, to be done by the customer, must be carried out according to local regulations
- Before starting up the plant a check must be made that no foreign objects are in the booth or in the ducting (input and exhaust air)
- It must be observed, that all components are grounded according to the local regulations, before start-up

# About this manual

---

## General information

This operating manual contains all the important information which you require for the working with the WPS01-PP03 system. It will safely guide you through the start-up process and give you references and tips for the optimal use of your new powder coating system.

Information about the function mode of the individual system components - reciprocators, booths, powder gun control units, powder guns etc. - should be referenced to their corresponding documents.









# Spare parts list

---

## Ordering spare parts

When ordering spare parts for powder coating equipment, please indicate the following specifications:

- Type and serial number of your powder coating equipment
- Order number, quantity and description of each spare part

**Example:**

- **Type** WPS01-PP03  
**Serial number** 1234 5678
- **Order no.** 203 386, 1 piece, Clamp - Ø 18/15 mm

When ordering cable or hose material, the required length must also be indicated. The spare part numbers of this yard/meter ware is always marked with an \*.

The wear parts are always marked with a #.

All dimensions of plastic hoses are specified with the external and internal diameter:

**Example:**

Ø 8/6 mm, 8 mm outside diameter (o/d) / 6 mm inside diameter (i/d)



---

**WARNING!**

**Only original ITW Gema spare parts should be used, because the hazardous location approval will be preserved that way! The use of spare parts from other manufacturers will invalidate the ITW Gema guarantee conditions!**

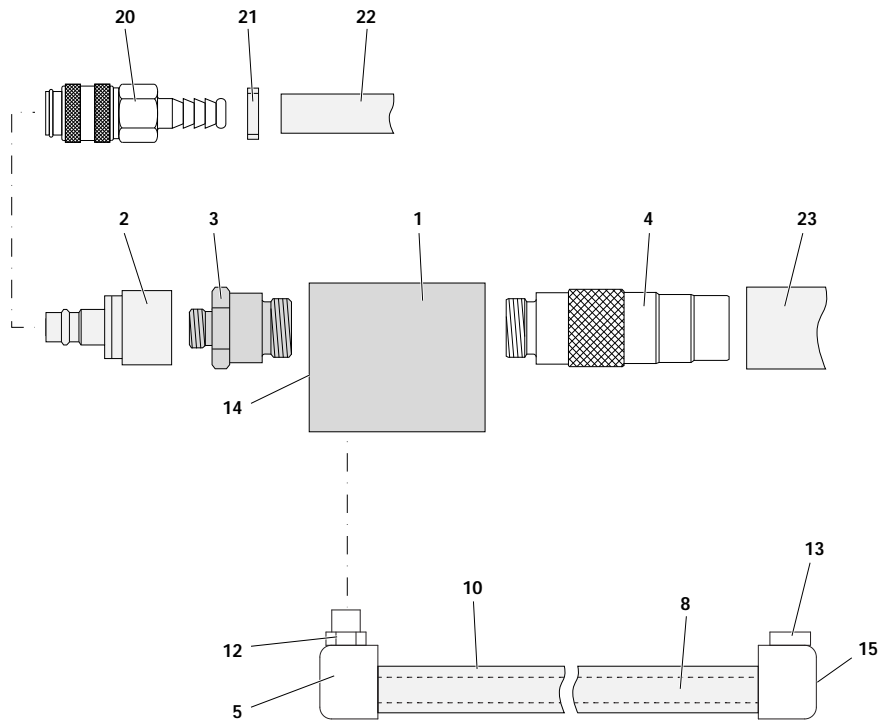
---

## PP03-1 Powder pump - spare parts list

	PP03-1 Powder pump - complete (pos. 1-15)	391 123
1	Pump body	391 093
2	Check valve	347 345
3	Nozzle	391 107
4	Hose connection	357 944
5	Fluidizer-T-piece	373 150
8	Tie rod - L=306 mm	373 052
10	Fluidizing tube - L=282 mm	373 109
12	Double nipple - 1/8"a-1/8"a	202 258
13	Plug cap - 1/8"a	203 297
14	Allen grub screw - M3x8 mm R	245 828
15	Countersunk head screw - M4x10 mm	214 655
20	Quick coupling	239 267
21	Hose clamp	203 386
22	Conveying air hose - NW 10	100 498*
23	Powder hose - NW 22	103 780*#

# Wearing part

\* Please indicate length



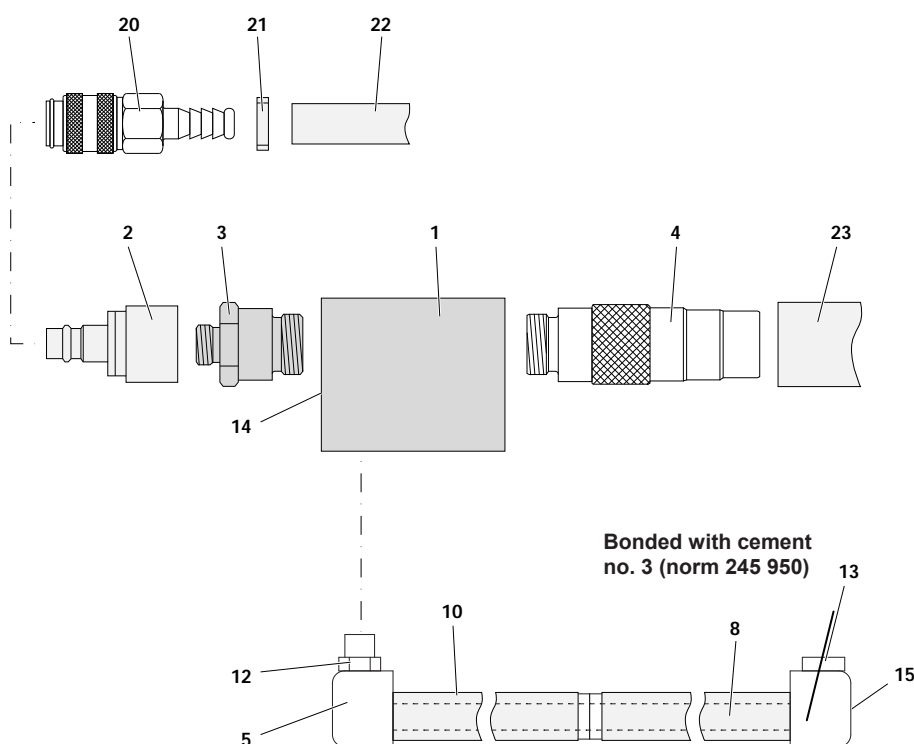
PP03-1 Powder pump

## PP03-2 Powder pump - spare parts list

	PP03-2 Powder pump - complete (pos. 1-15)	391 131
1	Pump body	391 093
2	Check valve	347 345
3	Nozzle	391 107
4	Hose connection	357 944
5	Fluidizer-T-piece	373 150
8	Tie rod - L=588 mm	391 115
10	Fluidizing tube - L=282 mm	373 109
12	Double nipple - 1/8"a-1/8"a	202 258
13	Plug cap - 1/8"a	203 297
14	Allen grub screw - M3x8 mm R	245 828
15	Countersunk head screw - M4x10 mm	214 655
20	Quick coupling	239 267
21	Hose clamp	203 386
22	Conveying air hose - NW 10	100 498*
23	Powder hose - NW 22	103 780*#

# Wearing part

\* Please indicate length



PP03-2 Powder pump