

# Horizontal axis series

## (XT10/XT11/XT12)

### Optimal horizontal movement of vertical reciprocators for width adjustment

The X-axis is the basis for building multi-axis systems and is used in various automation levels of a coating system: for manually or automatically operated moving sequences and for simple or complex coating processes.

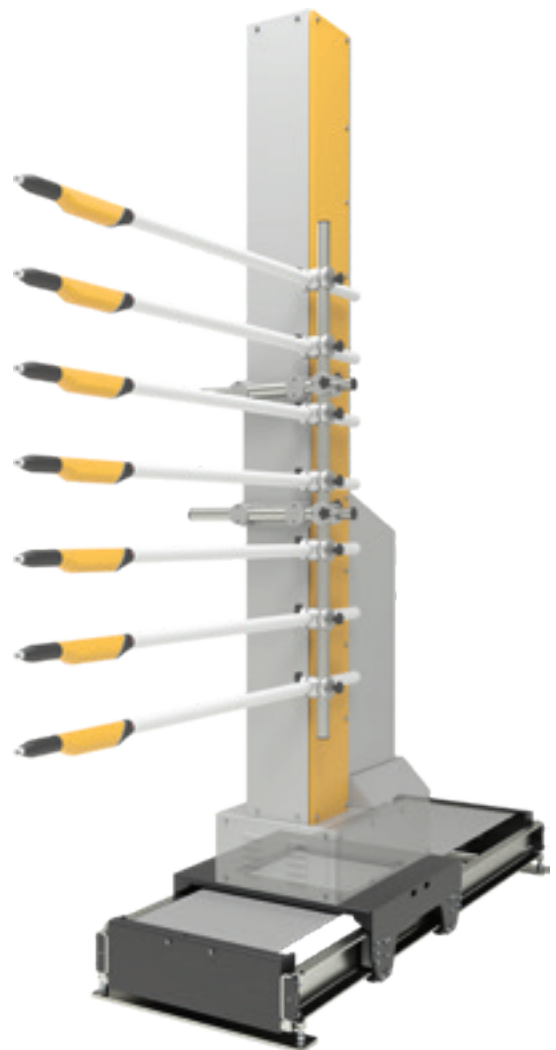
The coating distance between gun and the object surface is vital for precise coating results. XT axis series automatically positions a ZA vertical reciprocator towards the object, while adjusting to the part width. The axis is also used for automatic outside cleaning of the guns during color change.

#### Main Features:

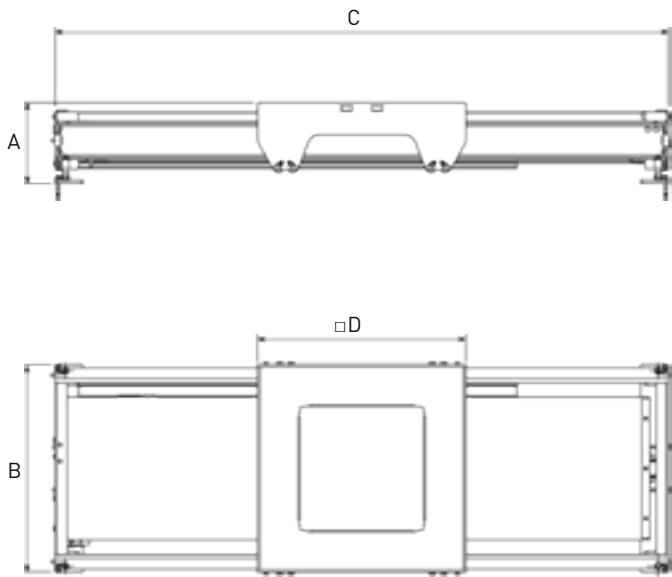
- Precision axis movement directly synchronized with the object width detection
- Precise and stable axis movement for accurate gun positioning
- Overall stability for high load capacity of associated components and flexible application arrangement
- Smooth running toothed belt transmission, robust design and wear-resistant construction
- Direct access for ease of inspection and maintenance
- Various stroke lengths
- Free axis programming, tailored program storage, Bus/CAN-Bus technology integrated into the control unit

#### Customer Benefits:

- Enables maximum application coverage, increasing productivity
- Fully integrated process solution that synchronizes object width with precise positioning of the powder guns for optimal coverage, improved quality and reproducible coating results
- Automatic triggered sequence for cleaning the outside of the guns
- Flexible components configuration enables a process tailored solution
- Low maintenance design with ease of access for routine maintenance



## Technical data

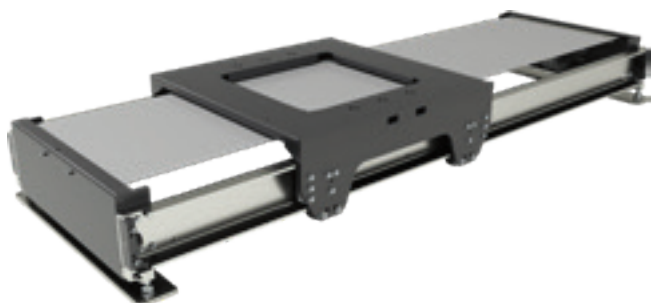


Horizontal axis	XT10	XT11	XT12
Stroke speed	0.01 - 0.6 m/s	0.08 - 0.6 m/s	0.01 - 0.6 m/s
Acceleration	0.1 - 2.0 m/s <sup>2</sup>	0.1 - 2.0 m/s <sup>2</sup>	0.1 - 1.5 m/s <sup>2</sup>
Stroke*	1000 / 1400 mm	1000 / 1400 mm	1450 - 2000 mm <i>Available in 50 mm steps</i>
Height (A)	245 <sup>+30</sup> <sub>0</sub> mm	245 <sup>+30</sup> <sub>0</sub> mm	290 <sup>+30</sup> <sub>0</sub> mm
Width (B)	750 mm	750 mm	750 mm
Length min. / max. (C)	1750 / 2150 mm	1750 / 2150 mm	2260 / 2810 mm
Platform (□D)	750 mm		
Positioning system	Incremental encoder		
Voltage	230 VAC, 50/60 Hz		
Temperature range	+10°C to +40°C		
Motor type	Three-phase asynchronous motor		
Approval	II 3 D Ex tc IIIC T160°C [Zone 22]		
Power	0.3 kW	0.3 kW	0.5 kW
Comformity	CE UKCA		

\*Customized stroke lengths available

### Associated system components:

- Vertical reciprocator types ZAx
- Stationary stand ZS04
- MagicControl 4.0 system control for XT10 and XT12
- OptiMove CR09-C control unit for XT11 axis
- OptiGun GA03-X automatic gun



Gema Switzerland reserves the right to make technical changes without prior notice!